

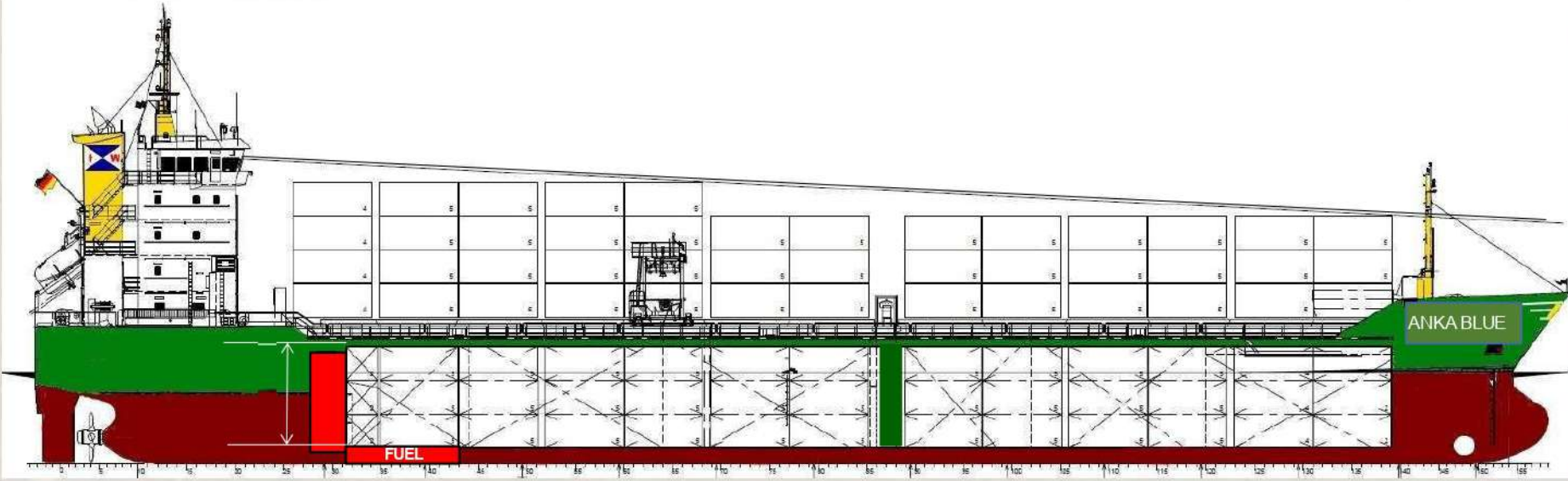
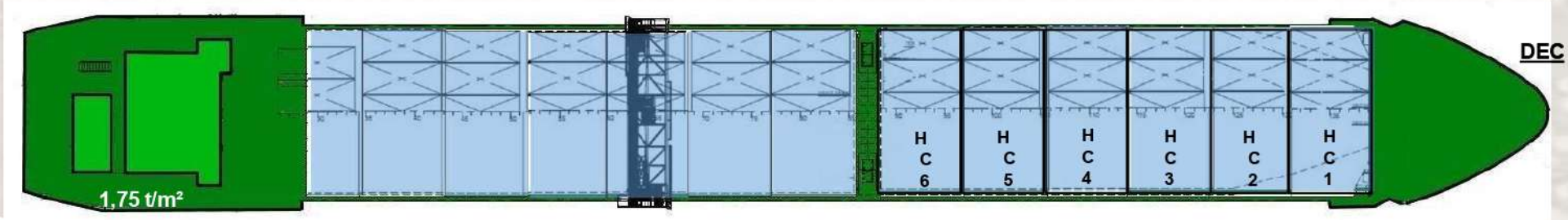
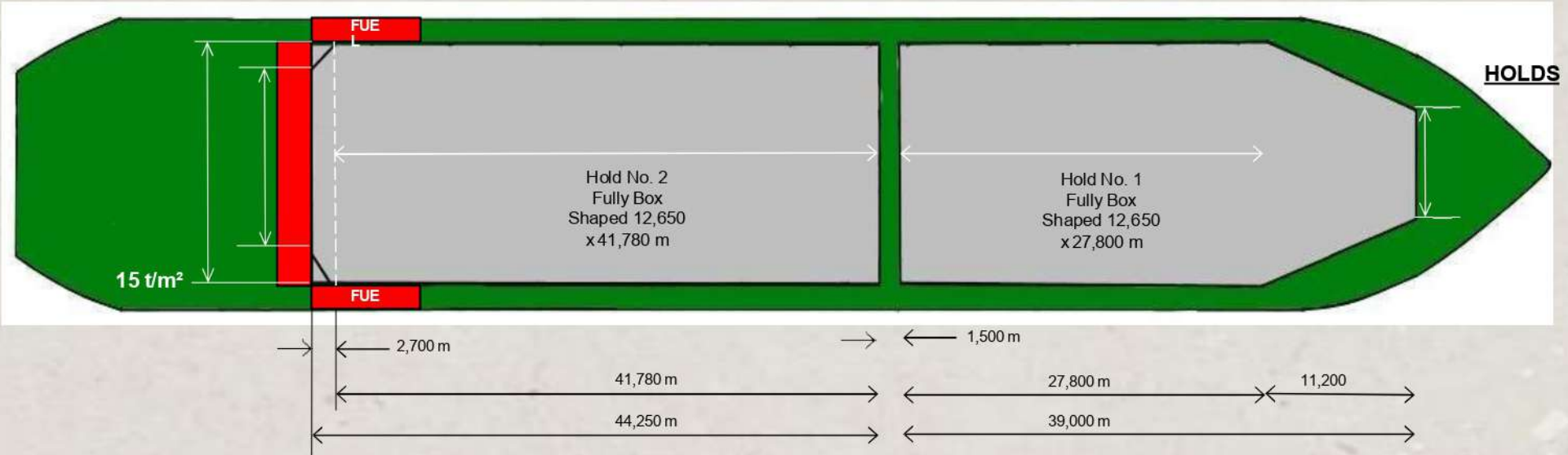
# Anka Blue

*Details*

---

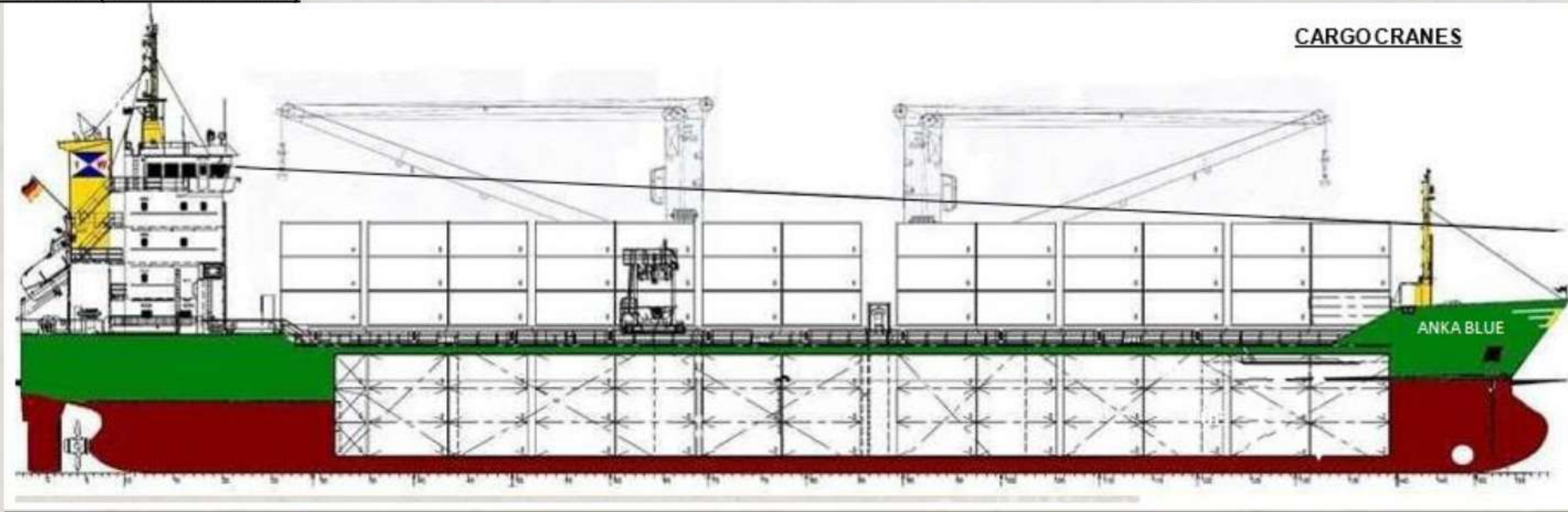


**MV ANKA BLUE (STOWAGE PLAN)**

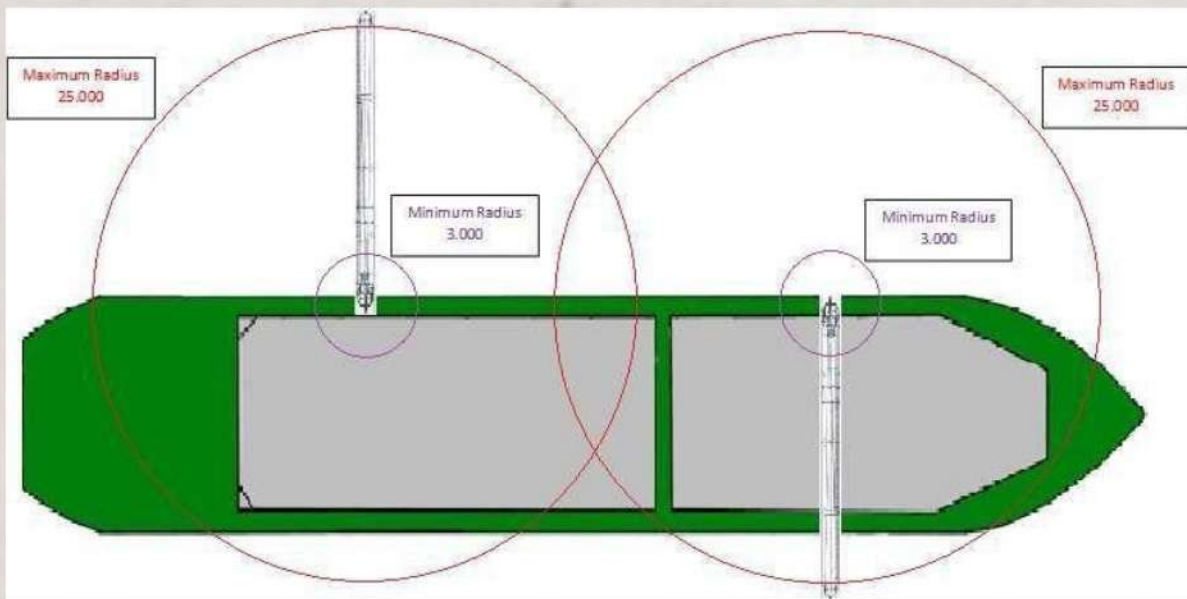


<b>MV „ANKA BLUE“ (IMO 9317808)</b>	
LOA	119,98 m
LPP	113,35 m
B	15,20 m
Depth	8,45 m
D s	7,032 m
D w	6,880 m
GRT / NRT	5057 / 2681
DWT	7805 mts

**MV ANKA BLUE (STOWAGE PLAN)**



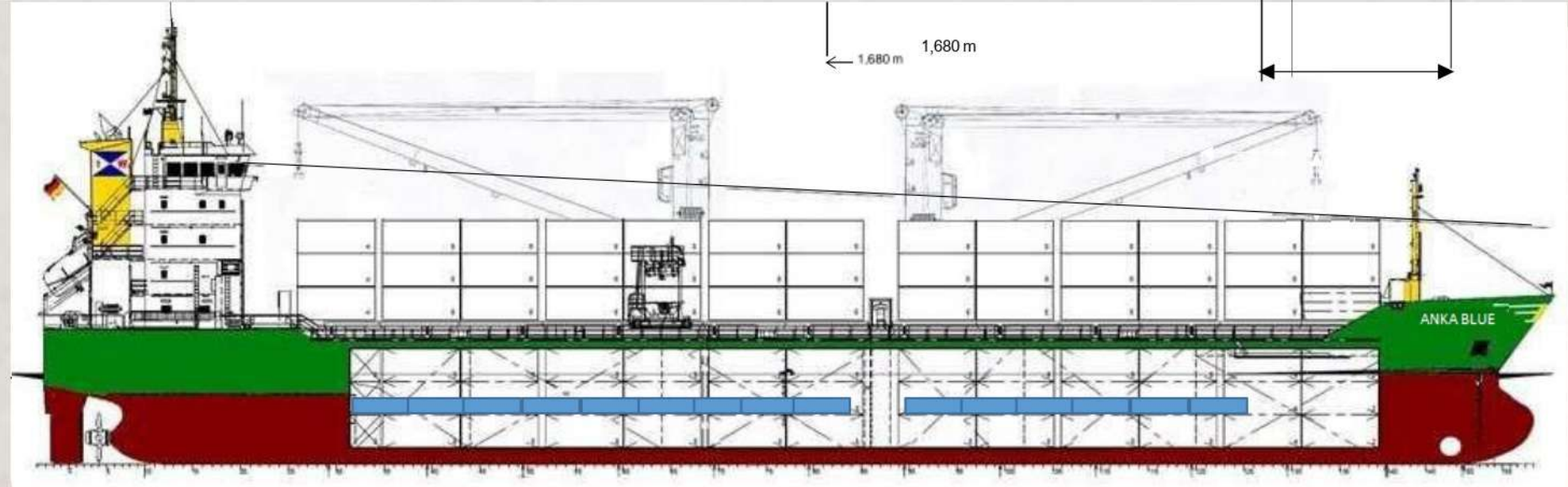
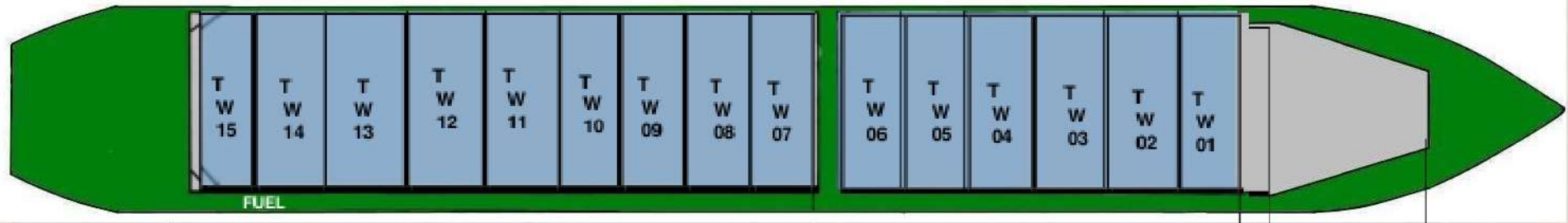
**CARGO CRANES**



Cargo Crane Particulars	
Crane Type	DK II
Capacity (SWL)	60t; 40t
Crane No. 1	SWL 40 T 3 – 25 m SWL 60 T 4 – 16 m
Crane No. 2	SWL 40 T 3 – 24 m SWL 60 T 4 – 16 m
Lifting Height	37.5m
Luffing	70s
Hoisting Speed	
SWL 40 t	0 – 18.0 m/min
SWL 16 t	0 – 36.0 m/minj
Turning speed	0 – 0.8 rpm
Slewing range	360°
Specification	40 t load and 25 m outreach at +/- 5° heeling and simutaneous trim of +/- 2°

**MV ANKA BLUE (STOWAGE PLAN)**

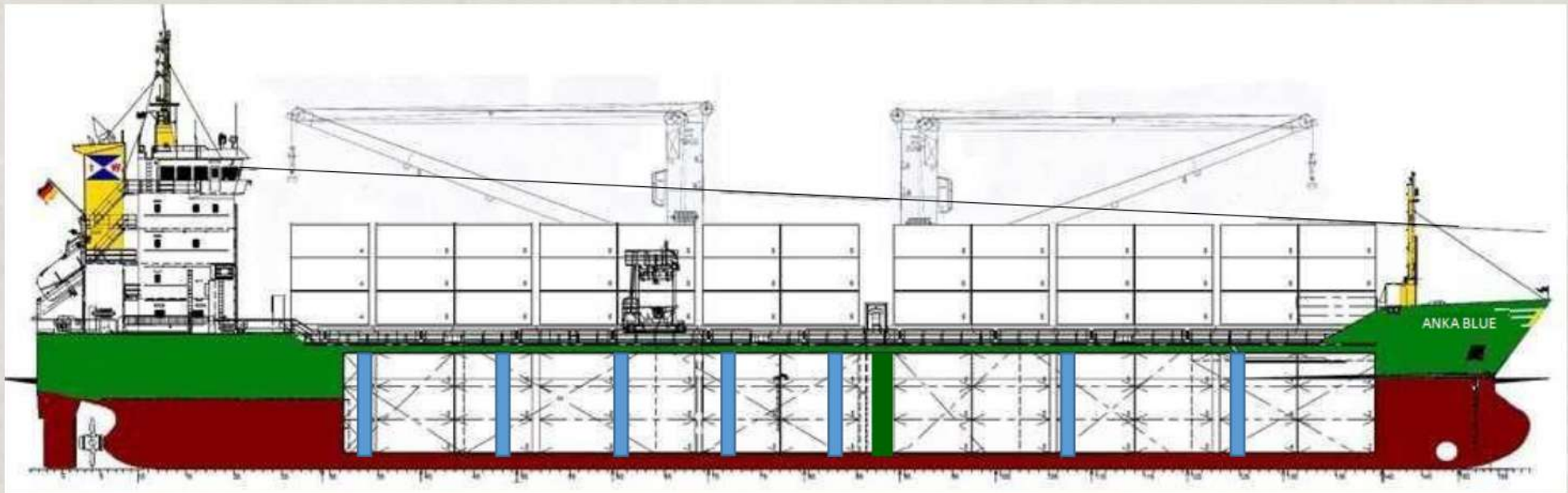
**TWEENDECK STORAGE**



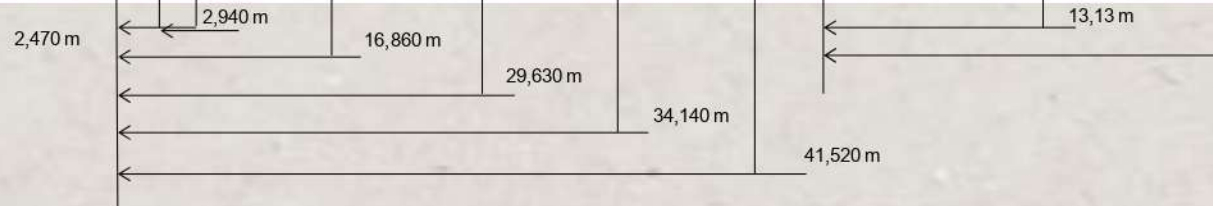
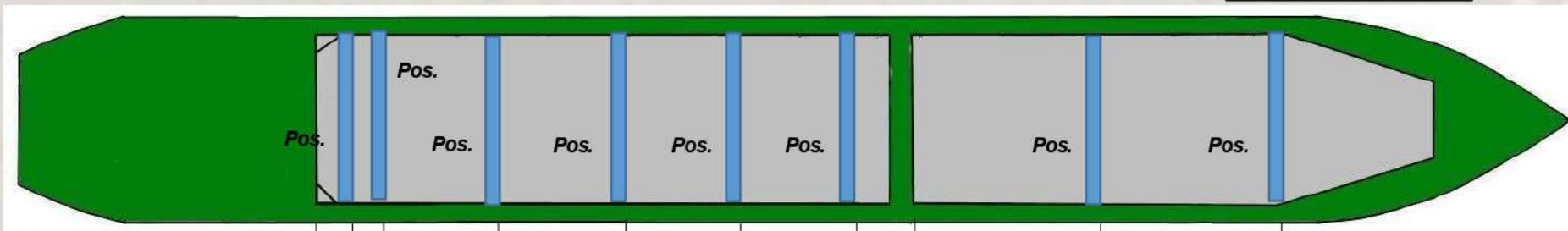
<b>TWEENDECKS HOLD NO.1</b>				
	Weight (t)	Volume (m3)	Length (mtrs)	M <sup>2</sup>
Pontoon 1	11.515	28.011	3.63	45,91
Pontoon 2	15.319	36.268	4.7	59,45
Pontoon 3	15.319	36.268	4.7	59,45
Pontoon 4	15.319	36.268	4.7	59,45
Pontoon 5	15.319	36.268	4.7	59,45
Pontoon 6	15.007	36.268	4.7	59,45
<b>Total</b>	<b>87,798</b>	<b>209,351</b>	<b>27,13</b>	<b>343,18</b>

<b>TWEENDECKS HOLD NO.2</b>				
	Weight (t)	Volume (m3)	Length (mtrs)	M <sup>2</sup>
Pontoon 7	14.326	36.268	3.63	45,91
Pontoon 8	14.326	36.268	4.7	59,45
Pontoon 9	14.326	36.268	4.7	59,45
Pontoon 10	15.007	36.268	4.7	59,45
Pontoon 11	14.326	36.268	4.7	59,45
Pontoon 12	14.326	36.268	4.7	59,45
Pontoon 13	14.326	36.268	4.7	59,45
Pontoon 14	14.326	36.268	4.7	59,45
Pontoon 15	15.011	38.42	4.97	62,87
<b>Total</b>	<b>130,3</b>	<b>328,564</b>	<b>41,5</b>	<b>538,47</b>

<b>TWEENDECKS Positon</b>			
	Weight (t)	LCg (mtrs)	VCg (mtrs)
<b>Twendecks Positions:</b>			
All 6 in use in Hold I	87.798	79.608	5.928
All 9 in use in Hold II	130.300	41.668	5.928
All in Store Position AP of Hold II	218.098	23,305 (22,65)	6.798

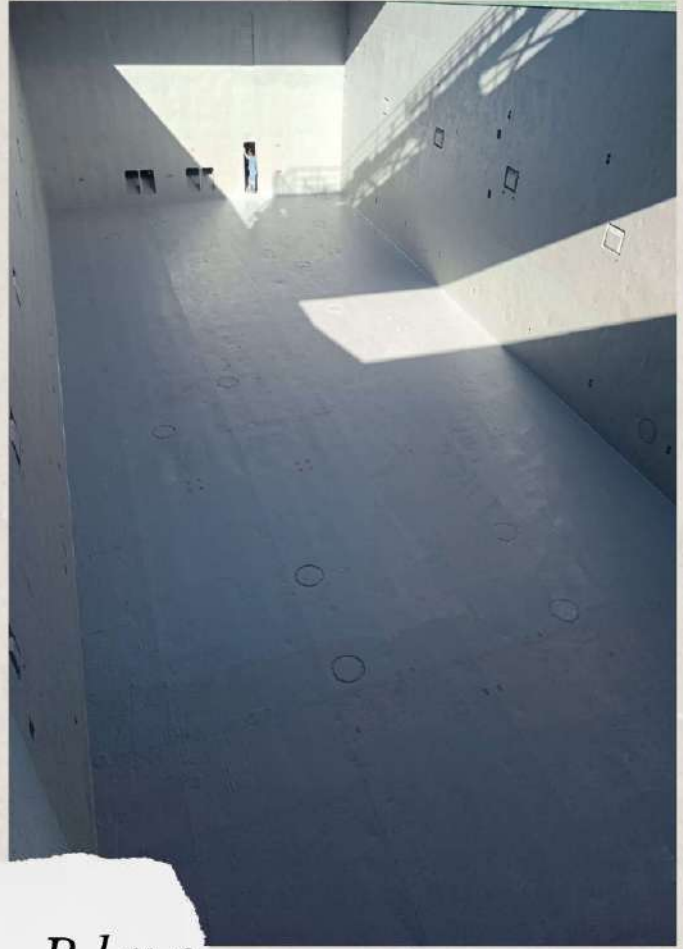


**BULKHEAD STOWAGE**



Bulkhead	36,268 m <sup>3</sup> (each) → 72,536 m <sup>3</sup> (total)
<i>Hold No. 1 Intakes</i>	
No bulkhead	4283.78 m <sup>3</sup>
Pos. 1	3271,870 m <sup>3</sup> / 1011.910 m <sup>3</sup>
Pos. 2	1567.200 m <sup>3</sup> / 2716.580 m <sup>3</sup>
<i>Hold No. 2 Intakes</i>	
No bulkhead	5269.800 m <sup>3</sup>
Pos. 3	4994.490 m <sup>3</sup> / 275.310 m <sup>3</sup>
Pos. 4	4062,200 m <sup>3</sup> / 1207,600 m <sup>3</sup>
Pos. 5	3523,080 m <sup>3</sup> / 1746,720 m <sup>3</sup>
Pos. 7	627.760 m <sup>3</sup> / 4642.040 m <sup>3</sup>
Pos. 8	275.310 m <sup>3</sup> / 4994.490 m <sup>3</sup>

# Hold Pictures



*Anka Blue*

