

# Anka Sky

*Details*



# MV ANKA SKY

IMO: 9145126 / CALL SIGN: YJWX2 / Built:1997

Mpurpose TweenDecker 2 x35 MT  
Geard

**Class** : PRS+100A5 E

**Flag** : Vanuatu

**Port of Reg:** Port Vila

**Loa:** 85,50 m

**Beam:** 12,80 m

**Moulded Depth:**7,10m

**Draught** :5,54 m

**Air draft** :25,90 m (ballast)

**Gross tonnage** :2528

**Net tonnage** :1372

**Dwt summer:** 3.851,99 MT (BULKHEADS ON BOARD)

**DWCC** :ABT 3640 / 3462 MT SUMMER/WINTER

**TPC** : 10,09 MT

**FWA** : 132 MM



**Main Engine** : MAN 7L28/32A 995 KW – 775 RPM

**Generator(s)** : MAN D 2866 LE 2 x 269 KVA

**Shaft D/Gg** : 50 KVA MAN D 0226 ME / 376 KW

**Bowthrusters** : BV 40 F /185 KW – 26 KN

**Fuel** : MGO

**Hold:** 56,55 x 10,20 x8,1m

**Tween:** 49,70 x 10,20 m

Adjustable height:

Hold Bottom To Lower Position: 4,20m

Hold Bottom To Upper Position: 5,30 m

Lower Position To Hatchcoaming: 3,30 m

upper position To Hatch Coaming: 2,20 m

**Capacity** : 163.000 cbft / 4.615 cbm

**Tanktop str** :20,0 to per sqm

**Tween Deck** : 2,50 to per sqm

**Deck strength** : 1,60 to per sqm

**Bulkheads** :2 Movable Units

**Various positions Imo fitted:** Yes/various

Classes –incl. imo 1

Hatchcover: Kvaerner type

Cranes: 2 NMF -each 35,00 mt Lifting Capacity

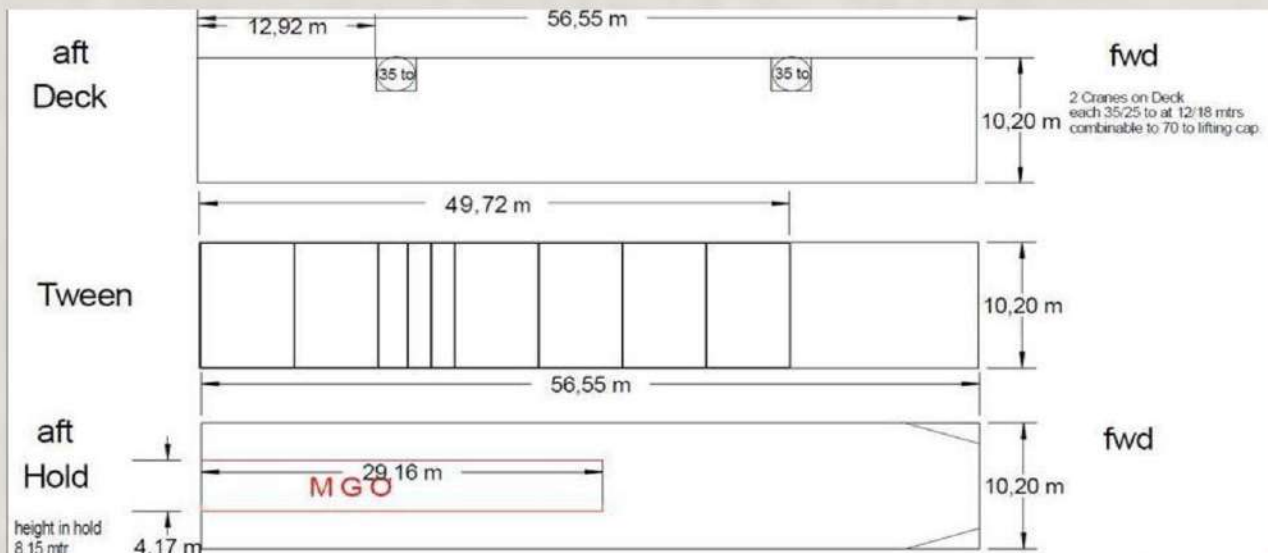
**Container - TEU**

**Below Deck** : 105 TEU

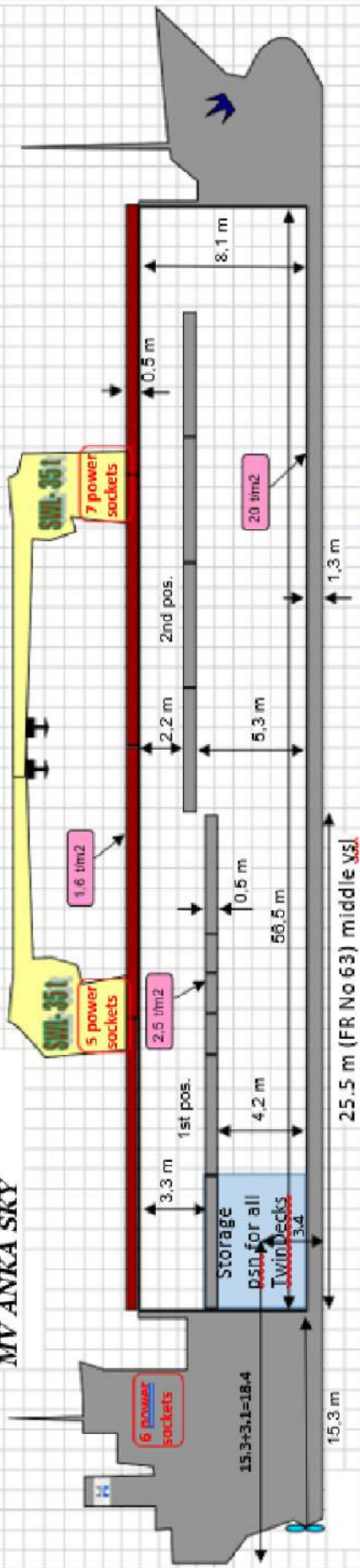
**On Deck** : 62 TEU

**Refer** : 18 PCS

All details about, given in good faith but not guaranteed. Specifications said to be correct, but without guarantee.



**MV ANKA SKY**



25.5 m (FR No 63) middle vsl

**Hold capacity (with out TD) - 4677 cbm / 165156 Cargo square**  
**Hold (with TD) - 4407 cbm / 155621 cbft/ JDS 270 Height og hold**  
**Hold demantoinis 56,55 x 10,2 x 8,1 m**  
**Summer draft 5,960 m DW 3851,990 mt**  
**Winter draft 5,836 m DW 3713,890 mt**  
**Fresh draft 6,092 m DW 3851,990 mt**

**- 1643 sq.meters.**  
**- 8,133 m fill h/covers**  
**- 7,995 m fill hinges**  
**Light Ship - 1388,52**  
**Keel to antennas 27,40 m**  
**Moulded draft - 7,100**  
**FWA - 127 mm**  
**LOA = 85,51 m**  
**LBP = 81,0 m**

**tweendeck**

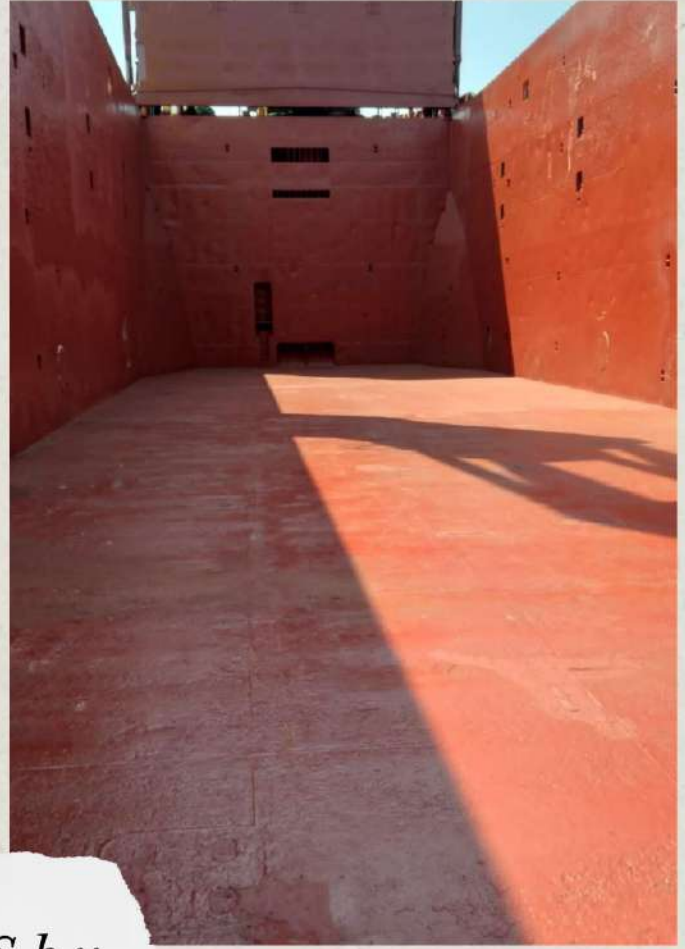
11	6.82 m	6.10 m	6.10 m	6.10 m	6.10 m	6.10 m	6.10 m	6.10 m	6.10 m	6.10 m	10.2 m
10	6.10 m	2.14m/1.7m	4.7m	6.10 m	6.10 m	6.10 m	6.10 m	6.10 m	6.10 m	6.10 m	6.772 m
9	6.10 m	6.10 m	6.10 m	6.10 m	6.10 m	6.10 m	6.10 m	6.10 m	6.10 m	6.10 m	6.772 m
8	6.10 m	6.10 m	6.10 m	6.10 m	6.10 m	6.10 m	6.10 m	6.10 m	6.10 m	6.10 m	6.772 m
7	6.10 m	6.10 m	6.10 m	6.10 m	6.10 m	6.10 m	6.10 m	6.10 m	6.10 m	6.10 m	6.772 m
6	6.10 m	6.10 m	6.10 m	6.10 m	6.10 m	6.10 m	6.10 m	6.10 m	6.10 m	6.10 m	6.772 m
5	6.10 m	6.10 m	6.10 m	6.10 m	6.10 m	6.10 m	6.10 m	6.10 m	6.10 m	6.10 m	6.772 m
4	6.10 m	6.10 m	6.10 m	6.10 m	6.10 m	6.10 m	6.10 m	6.10 m	6.10 m	6.10 m	6.772 m
3	6.10 m	6.10 m	6.10 m	6.10 m	6.10 m	6.10 m	6.10 m	6.10 m	6.10 m	6.10 m	6.772 m
2	6.10 m	6.10 m	6.10 m	6.10 m	6.10 m	6.10 m	6.10 m	6.10 m	6.10 m	6.10 m	6.772 m
1	6.10 m	6.10 m	6.10 m	6.10 m	6.10 m	6.10 m	6.10 m	6.10 m	6.10 m	6.10 m	6.772 m

**hold**

10	6.7 m	10.6 m	6.7 m	5.2 m	12.1 m	7.2 m	5.1 m	5.88 cbm 21103 cbft
9	6.7 m	10.6 m	6.7 m	5.2 m	12.1 m	7.2 m	5.1 m	5.88 cbm 21103 cbft
8	6.7 m	10.6 m	6.7 m	5.2 m	12.1 m	7.2 m	5.1 m	5.88 cbm 21103 cbft
7	6.7 m	10.6 m	6.7 m	5.2 m	12.1 m	7.2 m	5.1 m	5.88 cbm 21103 cbft
6	6.7 m	10.6 m	6.7 m	5.2 m	12.1 m	7.2 m	5.1 m	5.88 cbm 21103 cbft
5	6.7 m	10.6 m	6.7 m	5.2 m	12.1 m	7.2 m	5.1 m	5.88 cbm 21103 cbft
4	6.7 m	10.6 m	6.7 m	5.2 m	12.1 m	7.2 m	5.1 m	5.88 cbm 21103 cbft
3	6.7 m	10.6 m	6.7 m	5.2 m	12.1 m	7.2 m	5.1 m	5.88 cbm 21103 cbft
2	6.7 m	10.6 m	6.7 m	5.2 m	12.1 m	7.2 m	5.1 m	5.88 cbm 21103 cbft
1	6.7 m	10.6 m	6.7 m	5.2 m	12.1 m	7.2 m	5.1 m	5.88 cbm 21103 cbft

Constant 60 mts  
 X - 60  
 L - 40  
 V - 3-55

# Hold Pictures



*Anka Sky*

